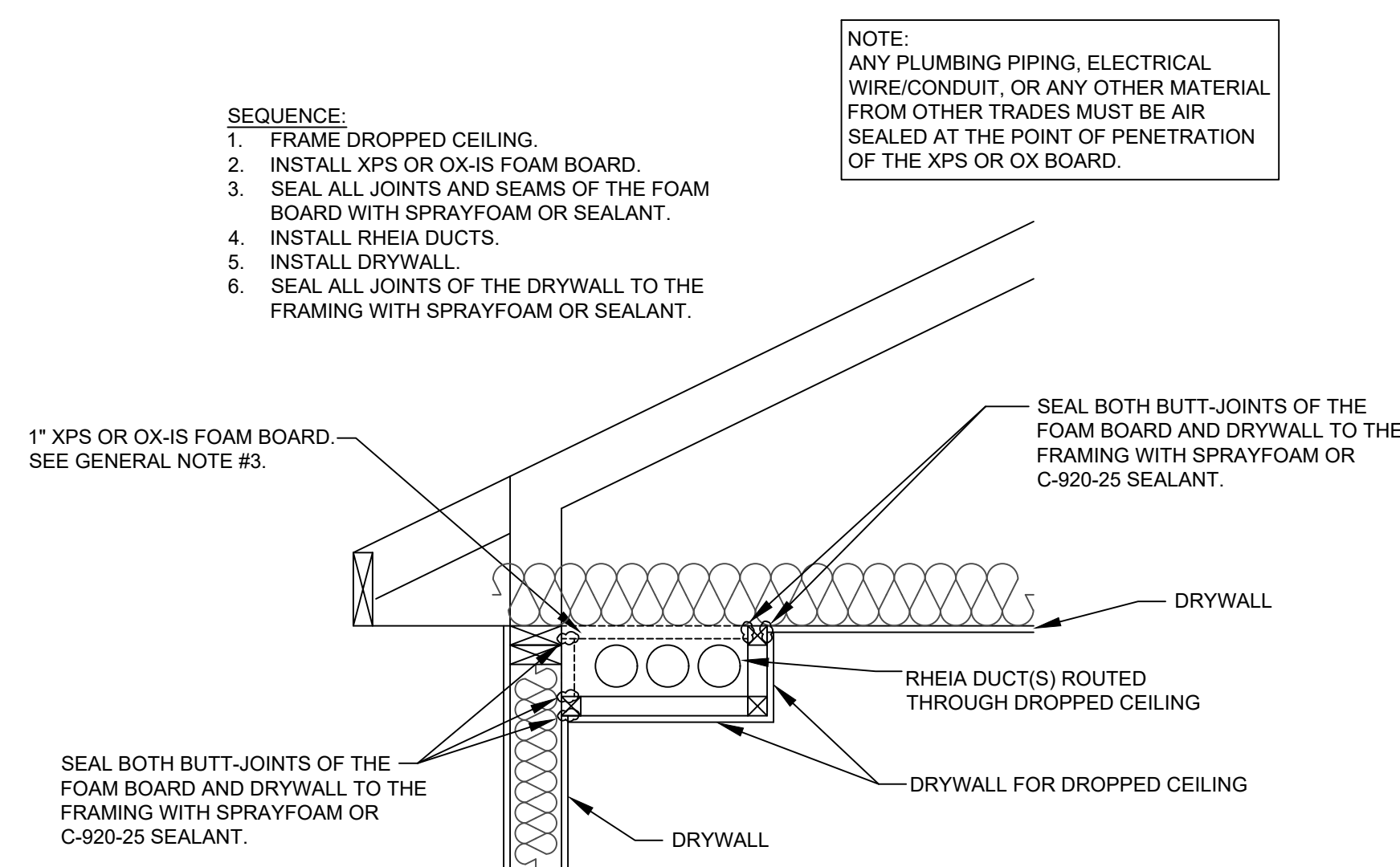
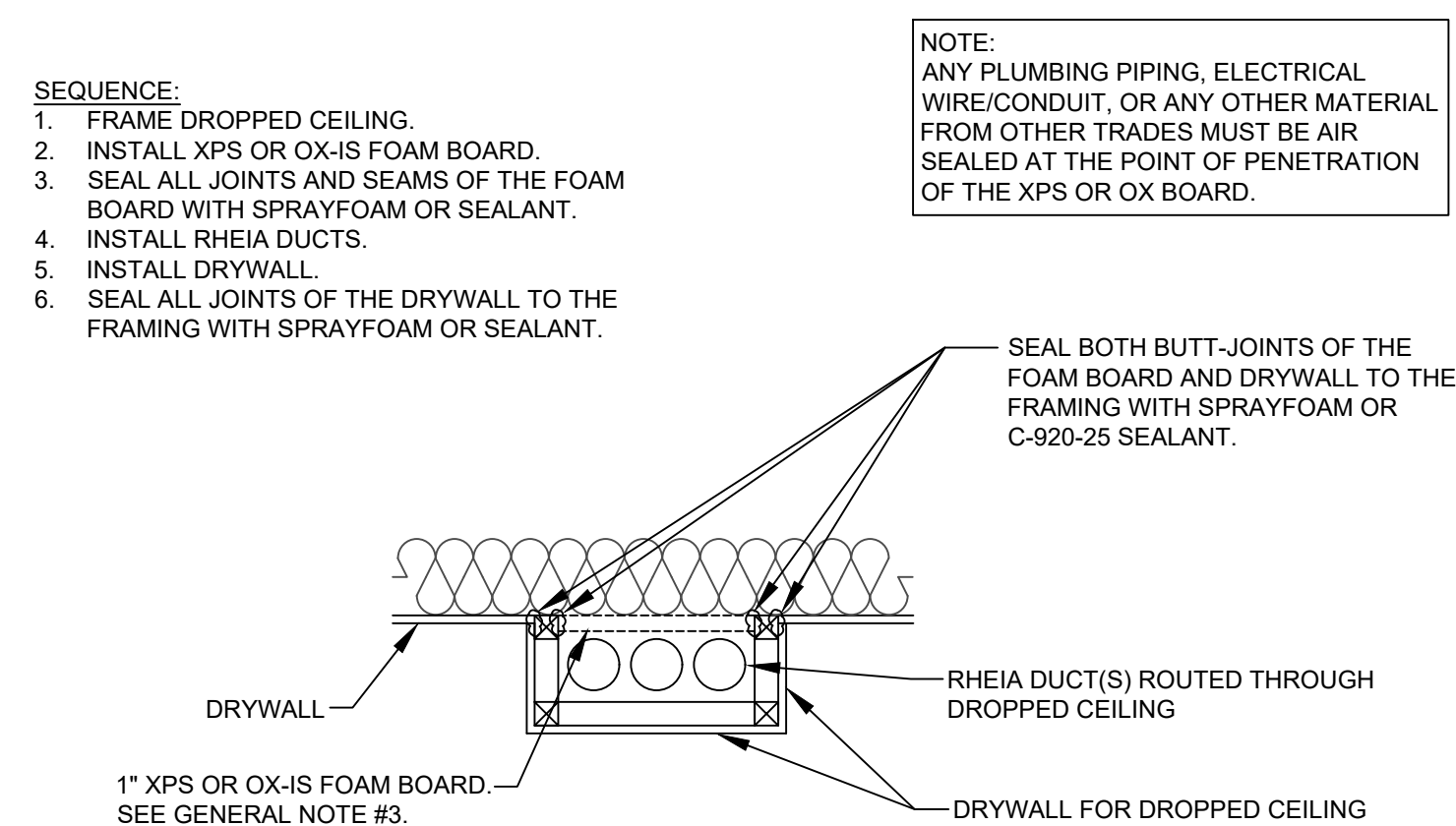


GENERAL NOTES:

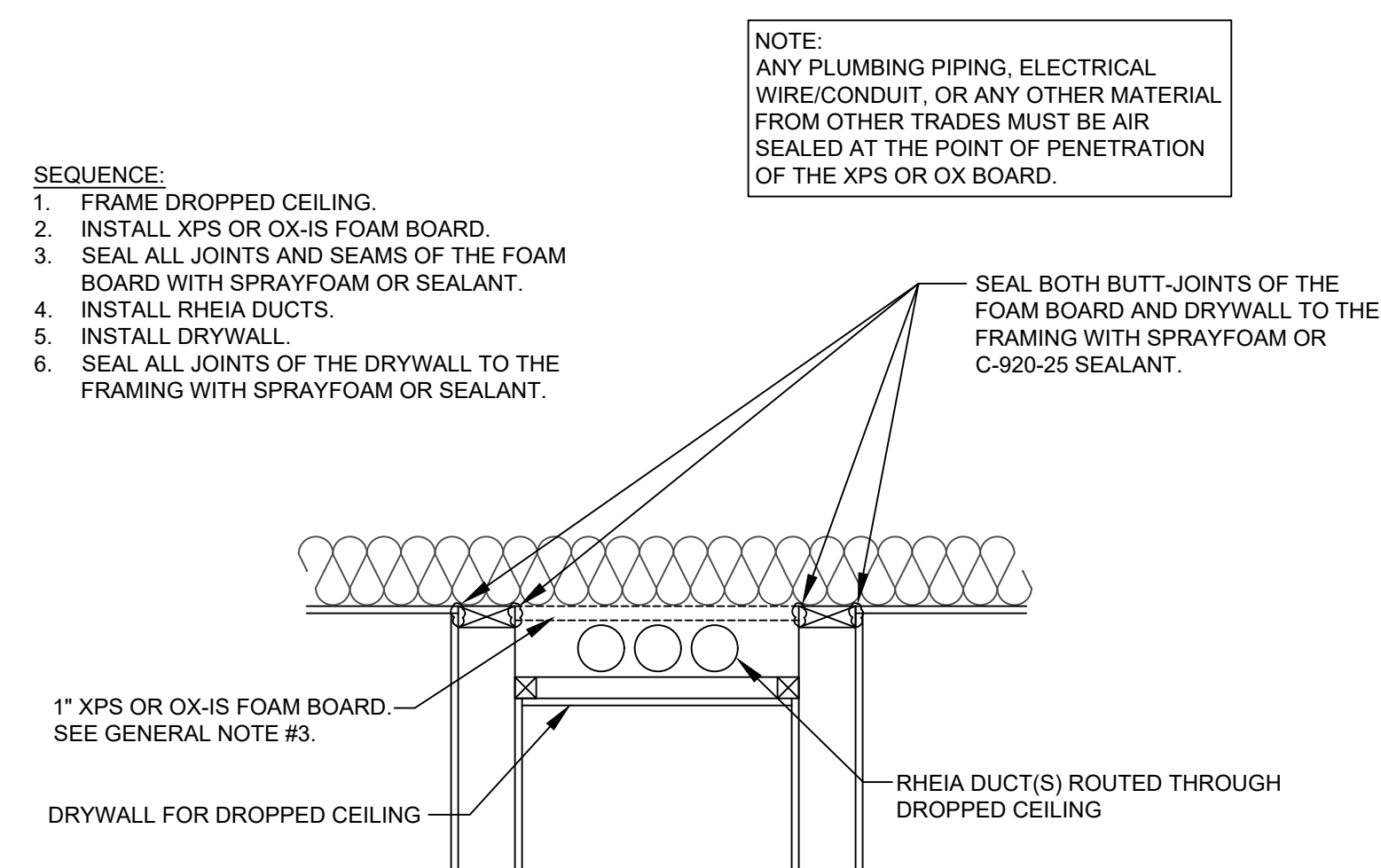
1. DETAILS SHOWN ARE SUGGESTED AIR SEALING METHODS FOR KEEPING RHEIA'S UNINSULATED DUCTS WITHIN THE BUILDING THERMAL ENVELOPE. BUILDERS SHOULD DEVELOP THEIR OWN CONSTRUCTION DETAILS TO ADD TO CONSTRUCTION DOCUMENTS AND CONSULT ENERGY RATING COMPANIES FOR BEST PRACTICES.
2. THIS DOCUMENT IS INTENDED TO SHOW ENVELOPE AIR SEALING BEST PRACTICES ONLY. FOR FRAMING DIMENSIONS AND MECHANICAL INSTALLATION DETAILS SEE THE RHEIA FRAMING INTEGRATION DOCUMENT AND PERMITTED CONSTRUCTION DOCUMENTS.
3. RHEIA RECOMMENDS USING XPS OR OX-IS BOARD FOR ALL AIR BARRIERS. THESE PRODUCTS PROVIDE A VAPOR BARRIER AS WELL AS EXTRA INSULATION. THIS WILL REDUCE COLD SURFACES WITHIN THE STRUCTURE REDUCING THE CHANCE FOR CONDENSATION TO OCCUR. DRYWALL AND T-PLY CAN PROVIDE AN AIR BARRIER, BUT ARE MORE PERMEABLE AND MORE DIFFICULT TO AIR SEAL. RHEIA DOES NOT RECOMMEND USING OSB FOR AN AIR BARRIER. OSB IS MORE AIR PERMEABLE, MORE DIFFICULT TO AIR SEAL, AND IS A FOOD SOURCE FOR MOLD IF ANY MOISTURE DOES OCCUR. CONSIDER THE CLIMATE WHEN SELECTING AN AIR BARRIER MATERIAL. MORE HUMID CLIMATES ARE MORE AT RISK FOR CONDENSATION, AND THEREFORE ARE MORE CRITICAL FOR A HIGH-PERFORMING AIR BARRIER.



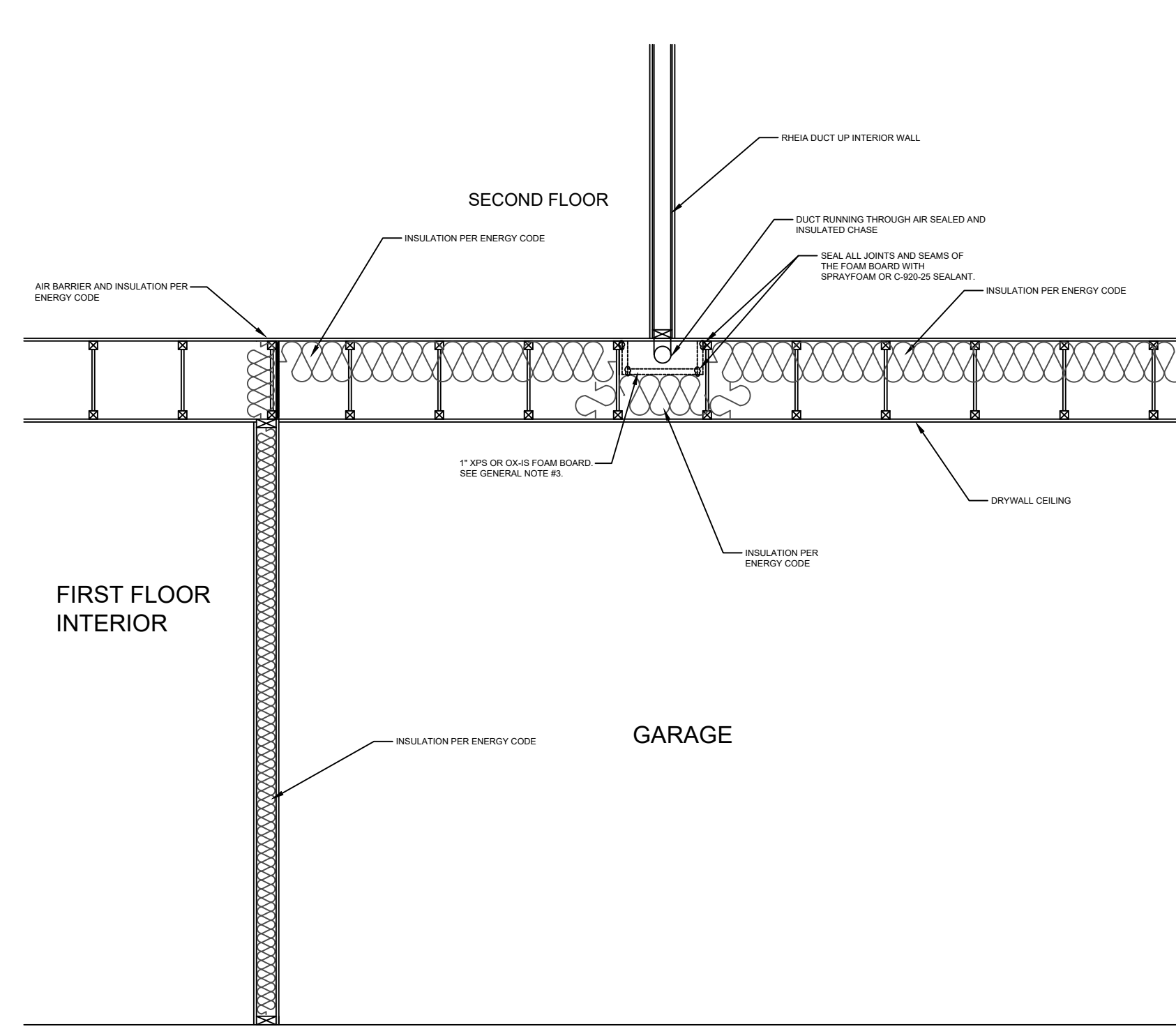
DROPPED CEILING DETAIL - EXTERIOR WALL



DROPPED CEILING DETAIL - CENTER OF ROOM

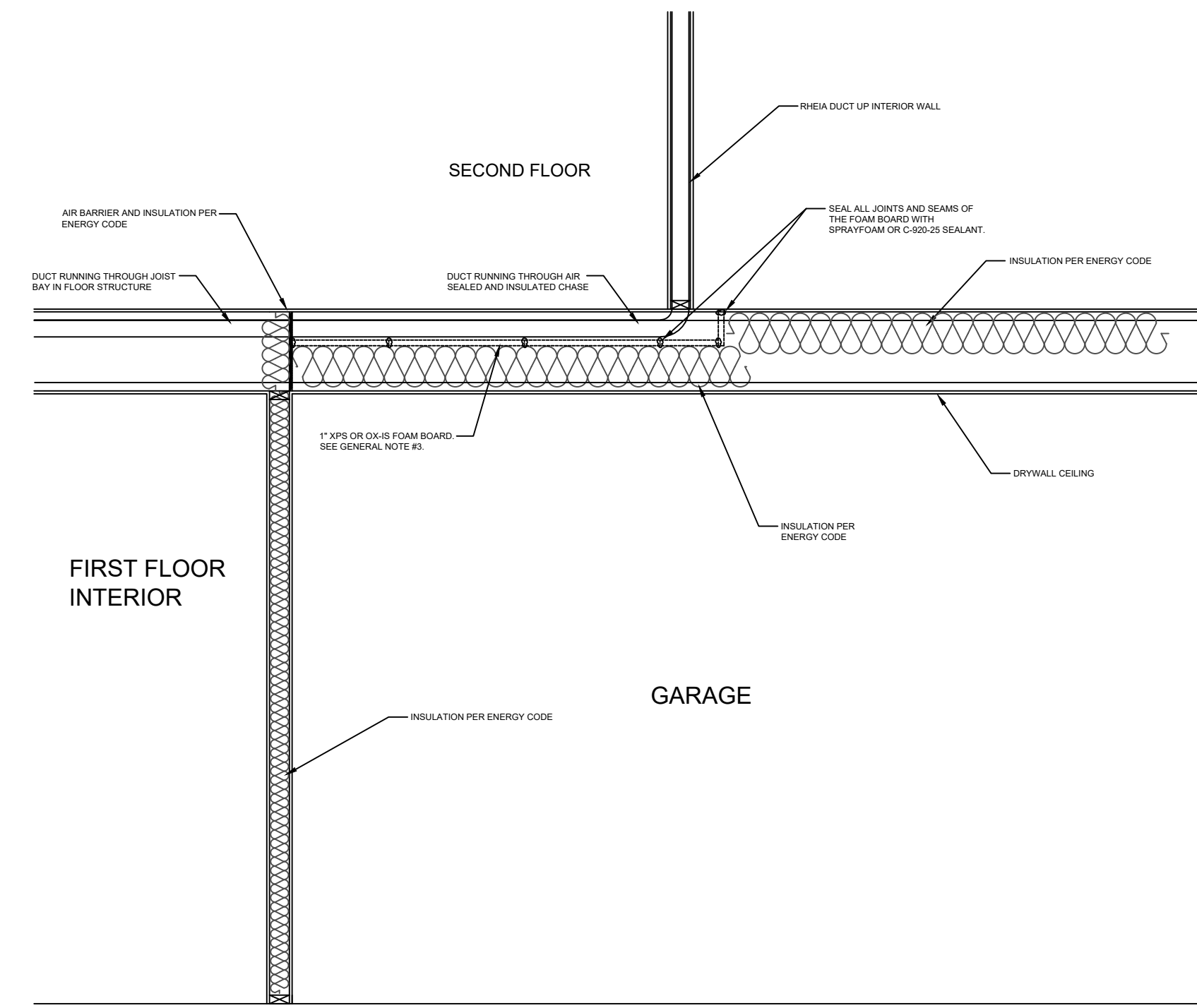


DROPPED CEILING DETAIL - INTERIOR WALL

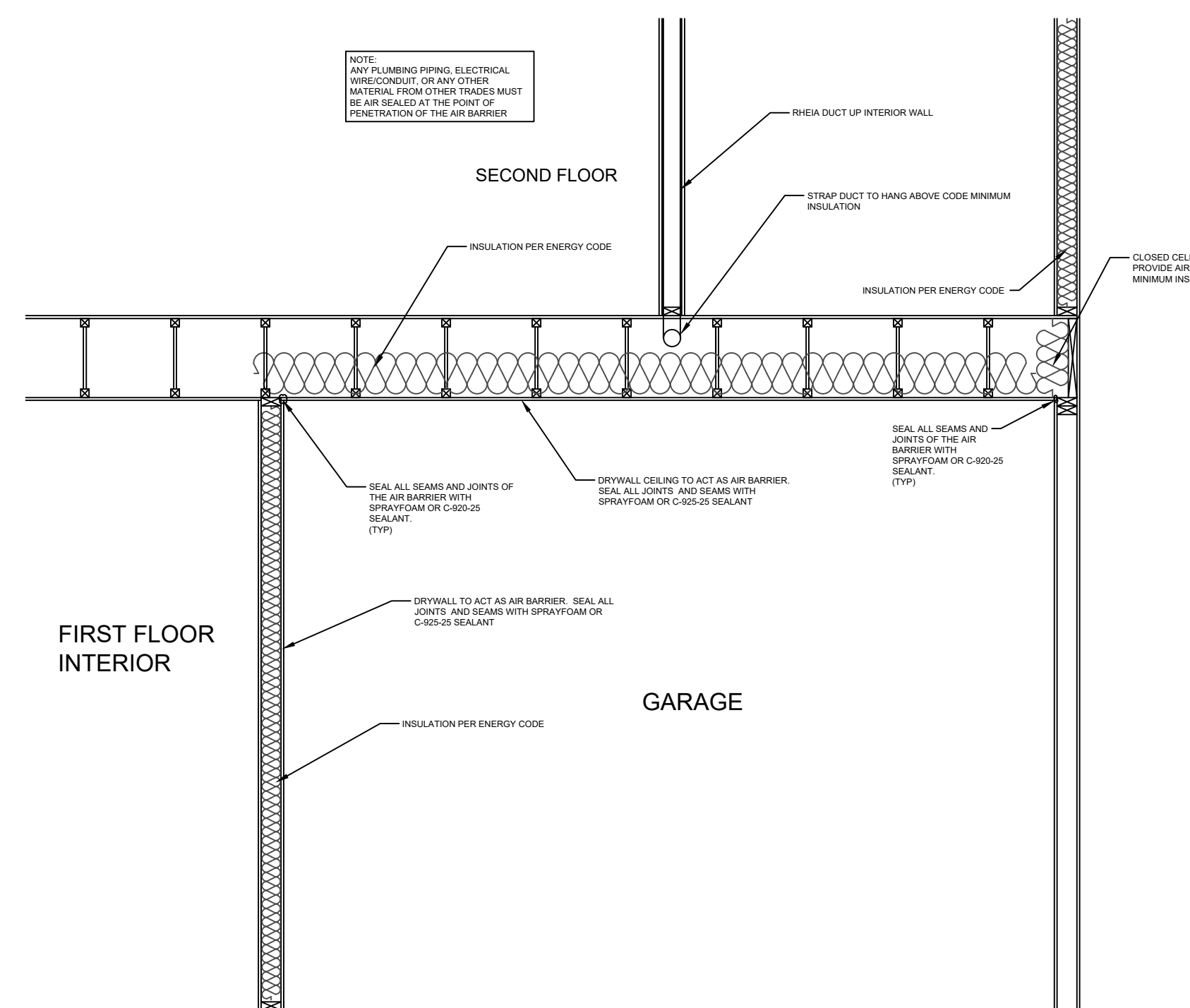


NOTE:
ANY PLUMBING, PIPING, ELECTRICAL, HANGERS, OR ANY OTHER MATERIAL FROM OTHER TRADES MUST BE AIR SEALED AT THE POINT OF PENETRATION OF THE XPS OR OSB BOARD.

SEQUENCE:
1. COMPLETE ALL FRAMING.
2. INSTALL RHEIA DUCTS.
3. INSTALL 1\"/>

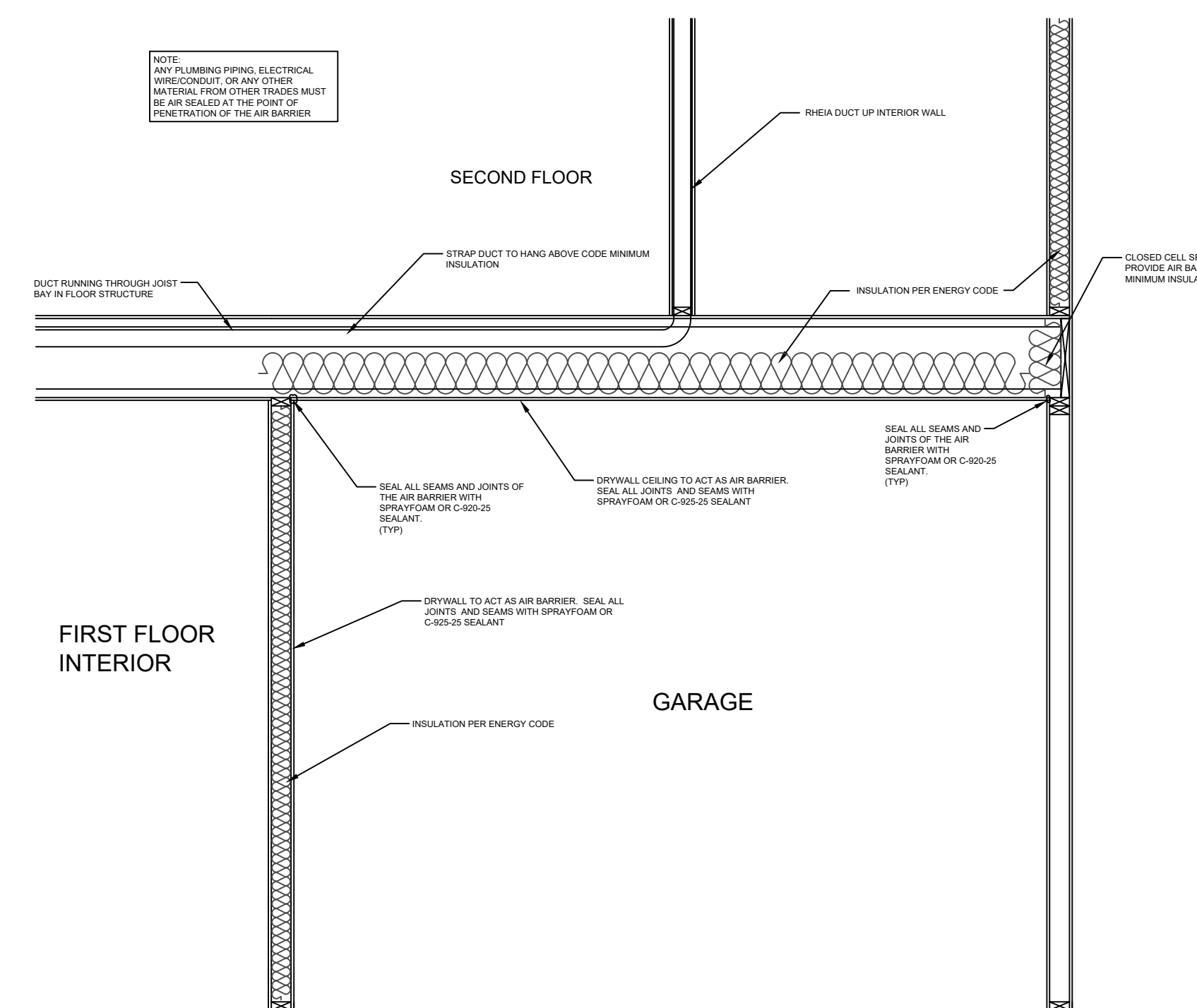


DUCT RUNNING THROUGH GARAGE JOIST BAY CHASE DETAIL



NOTE:
ANY PLUMBING, PIPING, ELECTRICAL, HANGERS, OR ANY OTHER MATERIAL FROM OTHER TRADES MUST BE AIR SEALED AT THE POINT OF PENETRATION OF THE AIR BARRIER.

SEQUENCE:
1. COMPLETE ALL FRAMING.
2. INSTALL RHEIA DUCTS.
3. INSTALL DRYWALL.
4. SEAL ALL JOINTS AND SEAMS OF THE AIR BARRIER WITH SPRAYFOAM OR SEALANT.



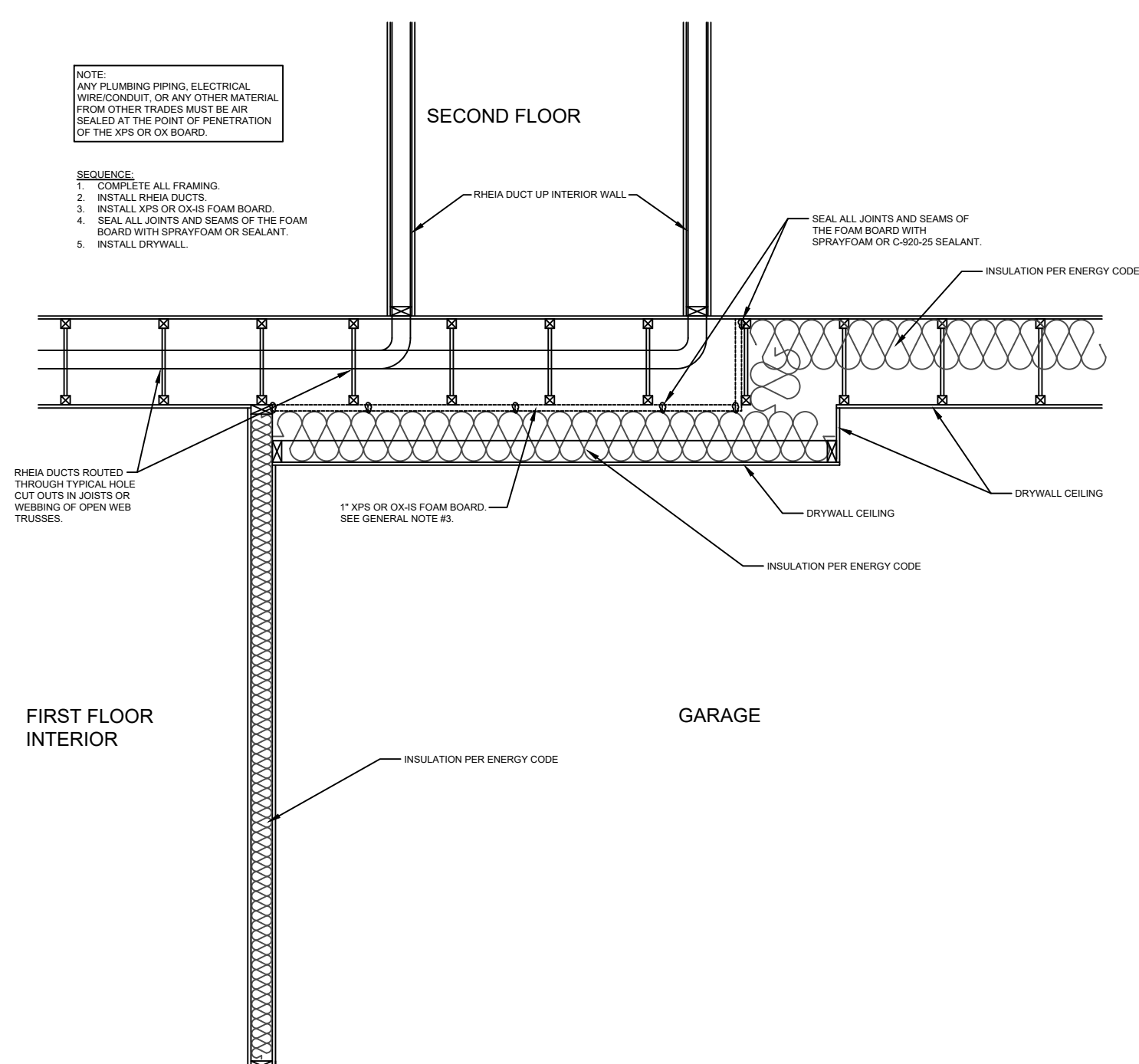
DUCT RUNNING THROUGH AN AIR SEALED GARAGE FLOOR DETAIL - FOR LOW HUMIDITY CLIMATES ONLY

GENERAL NOTES:

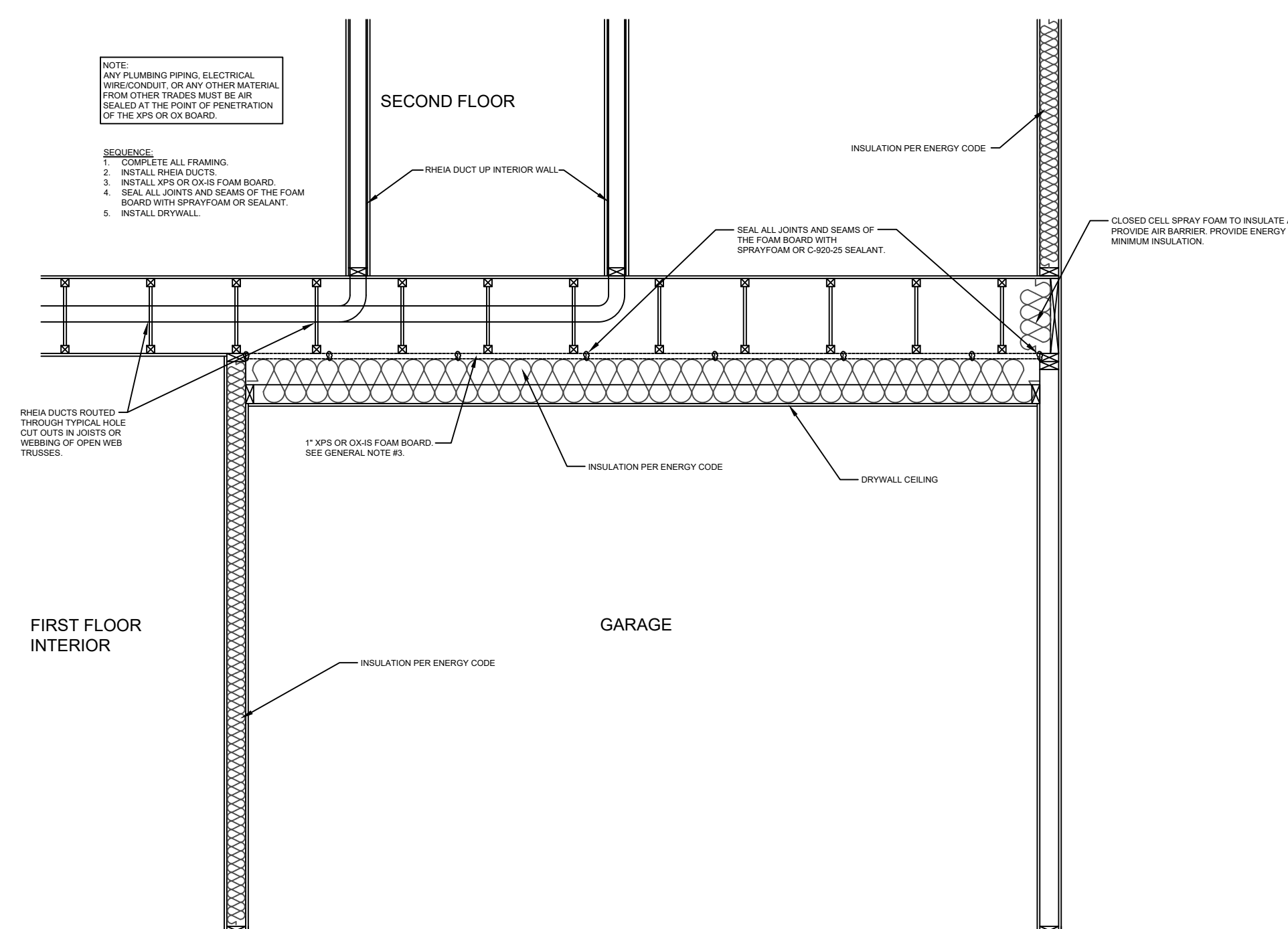
1. DETAILS SHOWN ARE SUGGESTED AIR SEALING METHODS FOR KEEPING RHEIA'S UNINSULATED DUCTS WITHIN THE BUILDING THERMAL ENVELOPE. BUILDERS SHOULD DEVELOP THEIR OWN CONSTRUCTION DETAILS TO ADD TO CONSTRUCTION DOCUMENTS AND CONSULT ENERGY RATING COMPANIES FOR BEST PRACTICES.
2. THIS DOCUMENT IS INTENDED TO SHOW ENVELOPE AIR SEALING BEST PRACTICES ONLY. FOR FRAMING DIMENSIONS AND MECHANICAL INSTALLATION DETAILS SEE THE RHEIA FRAMING INTEGRATION DOCUMENT AND PERMITTED CONSTRUCTION DOCUMENTS.
3. RHEIA RECOMMENDS USING XPS OR OX-IS BOARD FOR ALL AIR BARRIERS. THESE PRODUCTS PROVIDE A VAPOR BARRIER AS WELL AS EXTRA INSULATION. THIS WILL REDUCE COLD SURFACES WITHIN THE STRUCTURE REDUCING THE CHANCE FOR CONDENSATION TO OCCUR. DRYWALL AND T-PLY CAN PROVIDE AN AIR BARRIER, BUT ARE MORE PERMEABLE AND MORE DIFFICULT TO AIR SEAL. RHEIA DOES NOT RECOMMENDED USING OSB FOR AN AIR BARRIER. OSB IS MORE AIR PERMEABLE, MORE DIFFICULT TO AIR SEAL, AND IS A FOOD SOURCE FOR MOLD IF ANY MOISTURE DOES OCCUR. CONSIDER THE CLIMATE WHEN SELECTING AN AIR BARRIER MATERIAL. MORE HUMID CLIMATES ARE MORE AT RISK FOR CONDENSATION, AND THEREFORE ARE MORE CRITICAL FOR A HIGH-PERFORMING AIR BARRIER.

GENERAL NOTES:

1. DETAILS SHOWN ARE SUGGESTED AIR SEALING METHODS FOR KEEPING RHEIA'S UNINSULATED DUCTS WITHIN THE BUILDING THERMAL ENVELOPE. BUILDERS SHOULD DEVELOP THEIR OWN CONSTRUCTION DETAILS TO ADD TO CONSTRUCTION DOCUMENTS AND CONSULT ENERGY RATING COMPANIES FOR BEST PRACTICES.
2. THIS DOCUMENT IS INTENDED TO SHOW ENVELOPE AIR SEALING BEST PRACTICES ONLY. FOR FRAMING DIMENSIONS AND MECHANICAL INSTALLATION DETAILS SEE THE RHEIA FRAMING INTEGRATION DOCUMENT AND PERMITTED CONSTRUCTION DOCUMENTS.
3. RHEIA RECOMMENDS USING XPS OR OX-IS BOARD FOR ALL AIR BARRIERS. THESE PRODUCTS PROVIDE A VAPOR BARRIER AS WELL AS EXTRA INSULATION. THIS WILL REDUCE COLD SURFACES WITHIN THE STRUCTURE REDUCING THE CHANCE FOR CONDENSATION TO OCCUR. DRYWALL AND T-PLY CAN PROVIDE AN AIR BARRIER, BUT ARE MORE PERMEABLE AND MORE DIFFICULT TO AIR SEAL. RHEIA DOES NOT RECOMMEND USING OSB FOR AN AIR BARRIER. OSB IS MORE AIR PERMEABLE, MORE DIFFICULT TO AIR SEAL, AND IS A FOOD SOURCE FOR MOLD IF ANY MOISTURE DOES OCCUR. CONSIDER THE CLIMATE WHEN SELECTING AN AIR BARRIER MATERIAL. MORE HUMID CLIMATES ARE MORE AT RISK FOR CONDENSATION, AND THEREFORE ARE MORE CRITICAL FOR A HIGH-PERFORMING AIR BARRIER.



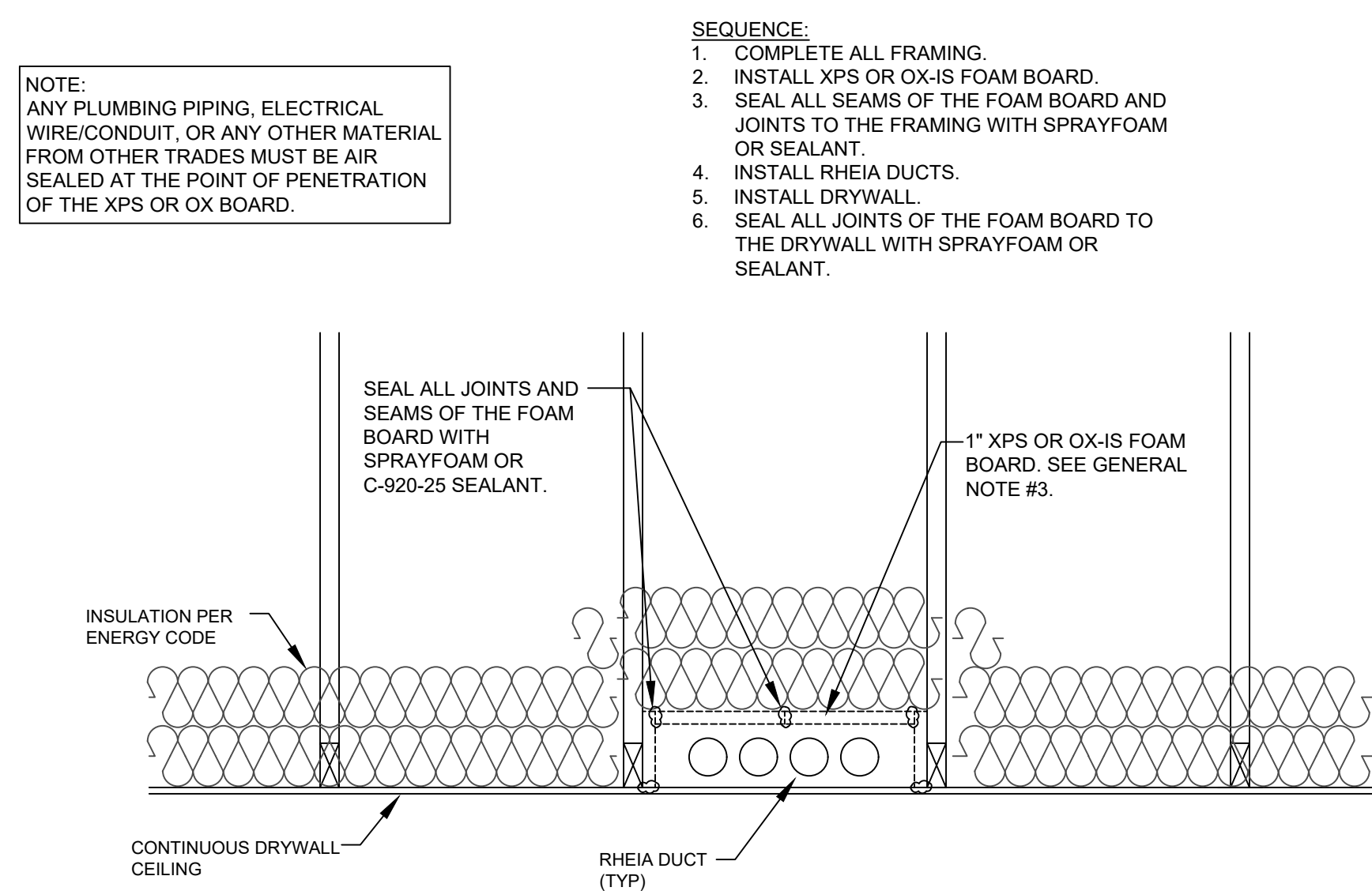
DUCT RUNNING THROUGH GARAGE WITH PARTIAL DROPPED CEILING DETAIL



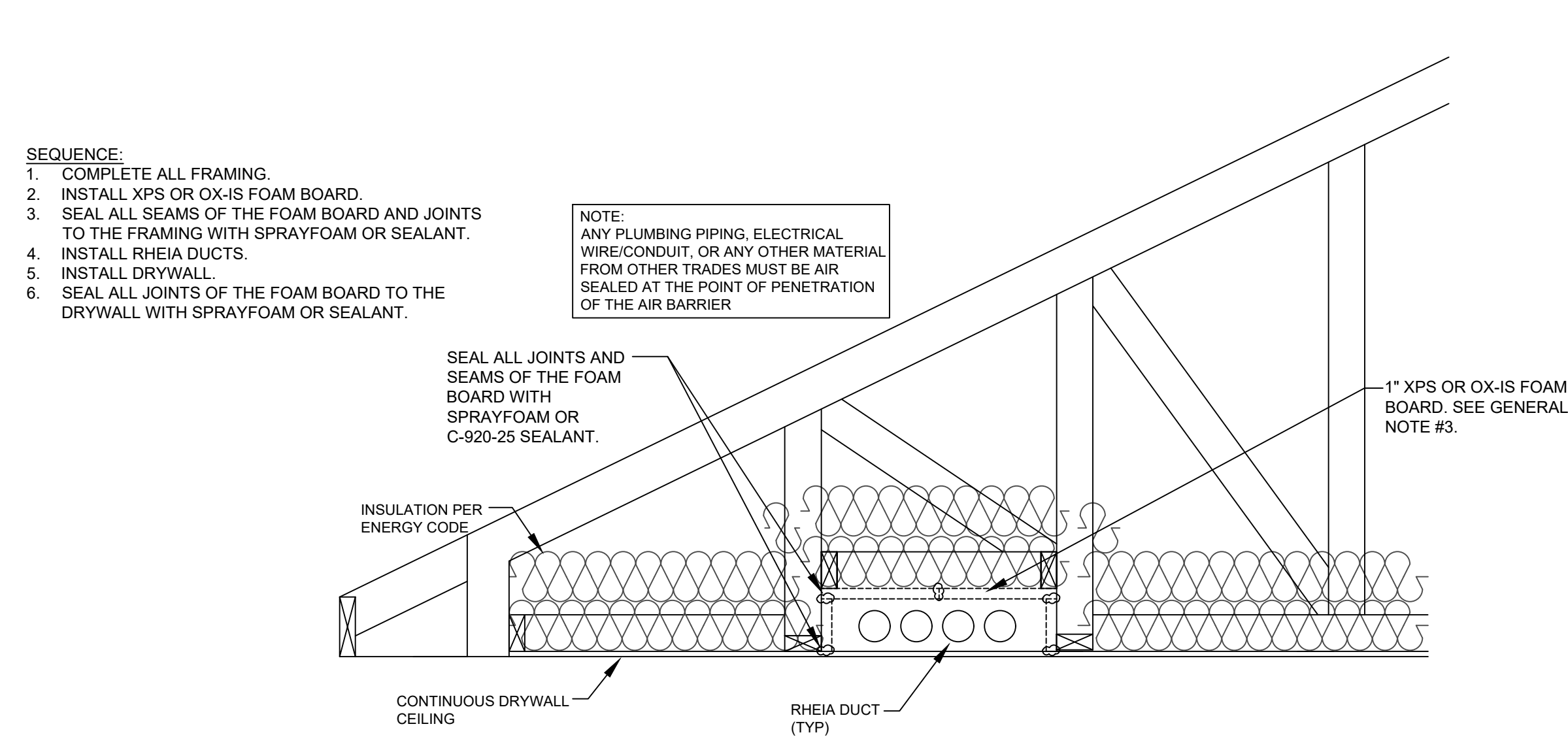
DUCT RUNNING THROUGH GARAGE WITH FULL DROPPED CEILING DETAIL

GENERAL NOTES:

1. DETAILS SHOWN ARE SUGGESTED AIR SEALING METHODS FOR KEEPING RHEIA'S UNINSULATED DUCTS WITHIN THE BUILDING THERMAL ENVELOPE. BUILDERS SHOULD DEVELOP THEIR OWN CONSTRUCTION DETAILS TO ADD TO CONSTRUCTION DOCUMENTS AND CONSULT ENERGY RATING COMPANIES FOR BEST PRACTICES.
2. THIS DOCUMENT IS INTENDED TO SHOW ENVELOPE AIR SEALING BEST PRACTICES ONLY. FOR FRAMING DIMENSIONS AND MECHANICAL INSTALLATION DETAILS SEE THE RHEIA FRAMING INTEGRATION DOCUMENT AND PERMITTED CONSTRUCTION DOCUMENTS.
3. RHEIA RECOMMENDS USING XPS OR OX-IS BOARD FOR ALL AIR BARRIERS. THESE PRODUCTS PROVIDE A VAPOR BARRIER AS WELL AS EXTRA INSULATION. THIS WILL REDUCE COLD SURFACES WITHIN THE STRUCTURE REDUCING THE CHANCE FOR CONDENSATION TO OCCUR. DRYWALL AND T-PLY CAN PROVIDE AN AIR BARRIER, BUT ARE MORE PERMEABLE AND MORE DIFFICULT TO AIR SEAL. RHEIA DOES NOT RECOMMEND USING OSB FOR AN AIR BARRIER. OSB IS MORE AIR PERMEABLE, MORE DIFFICULT TO AIR SEAL, AND IS A FOOD SOURCE FOR MOLD IF ANY MOISTURE DOES OCCUR. CONSIDER THE CLIMATE WHEN SELECTING AN AIR BARRIER MATERIAL. MORE HUMID CLIMATES ARE MORE AT RISK FOR CONDENSATION, AND THEREFORE ARE MORE CRITICAL FOR A HIGH-PERFORMING AIR BARRIER.



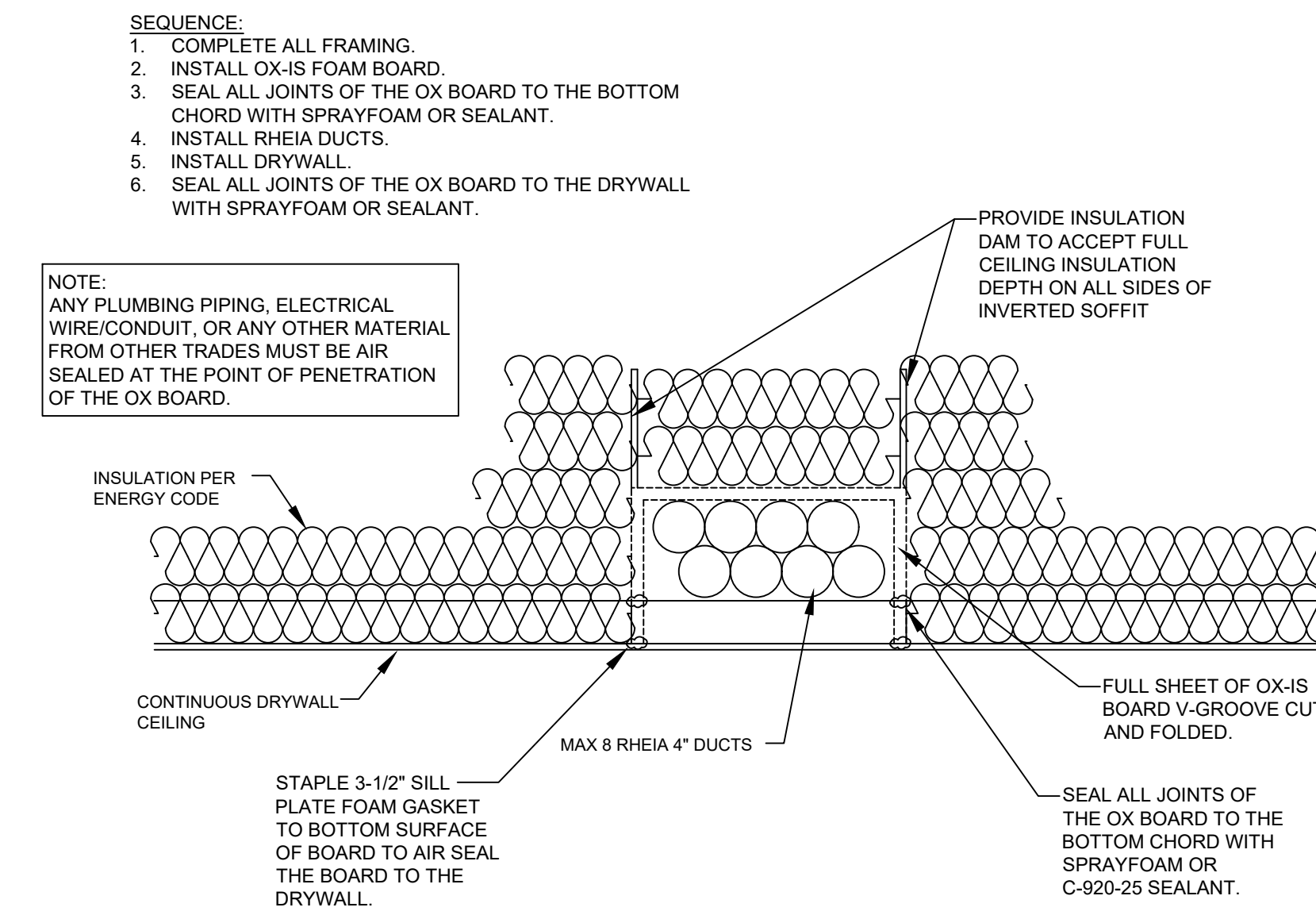
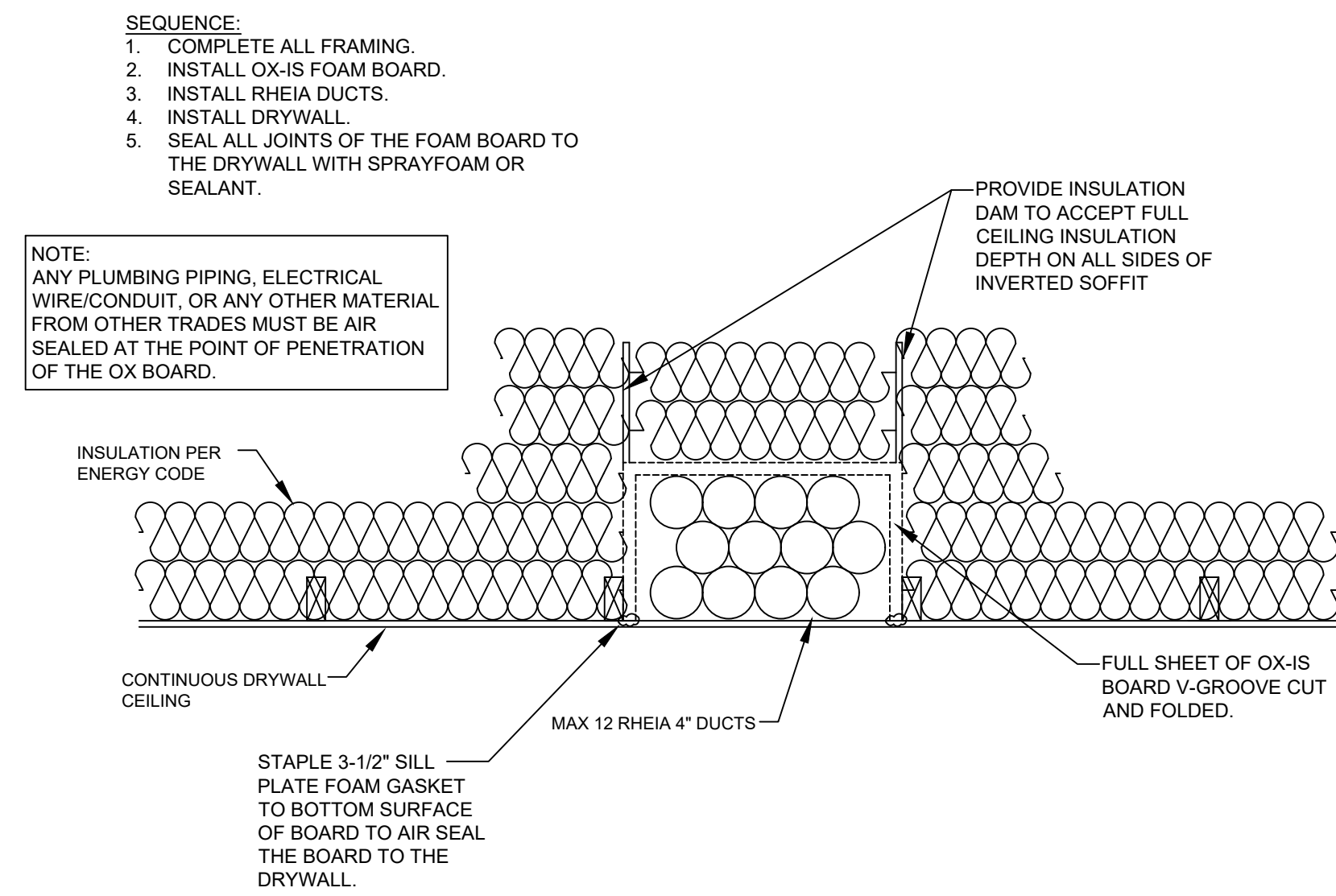
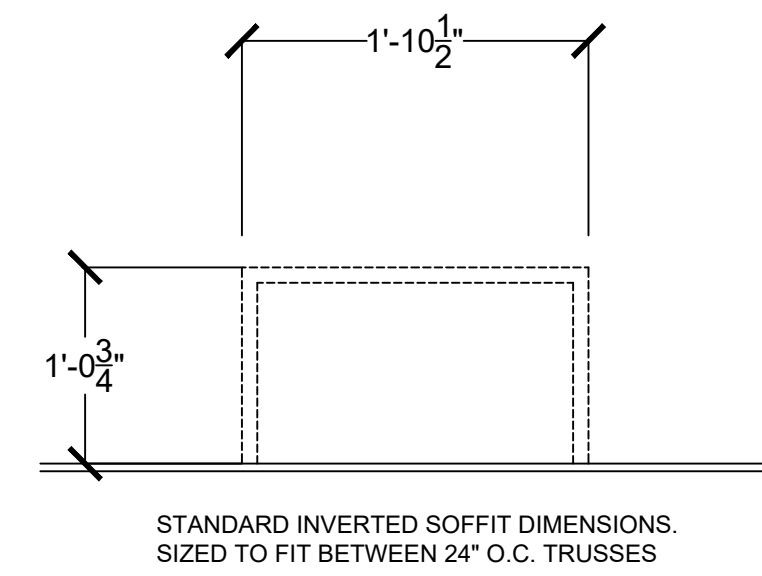
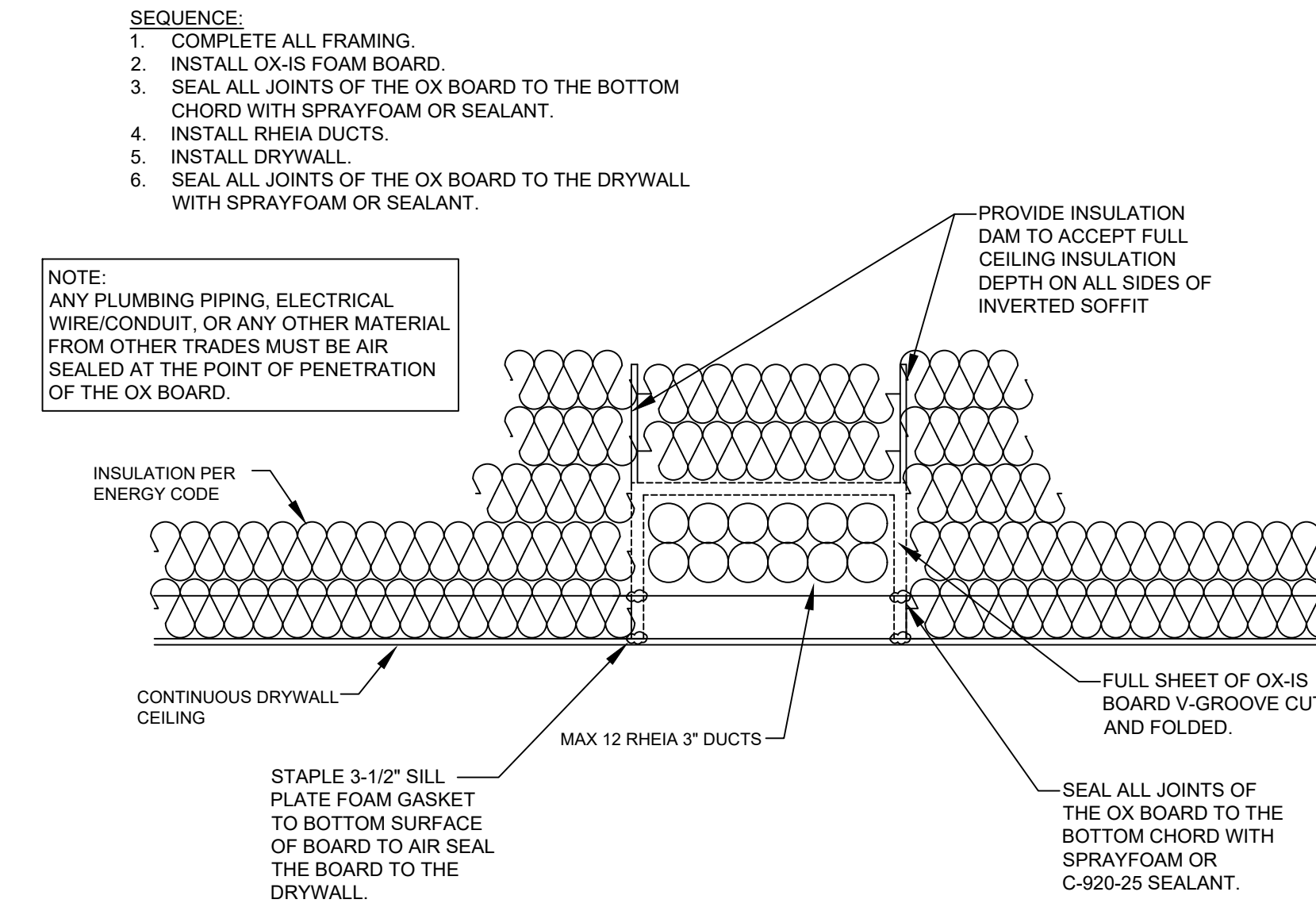
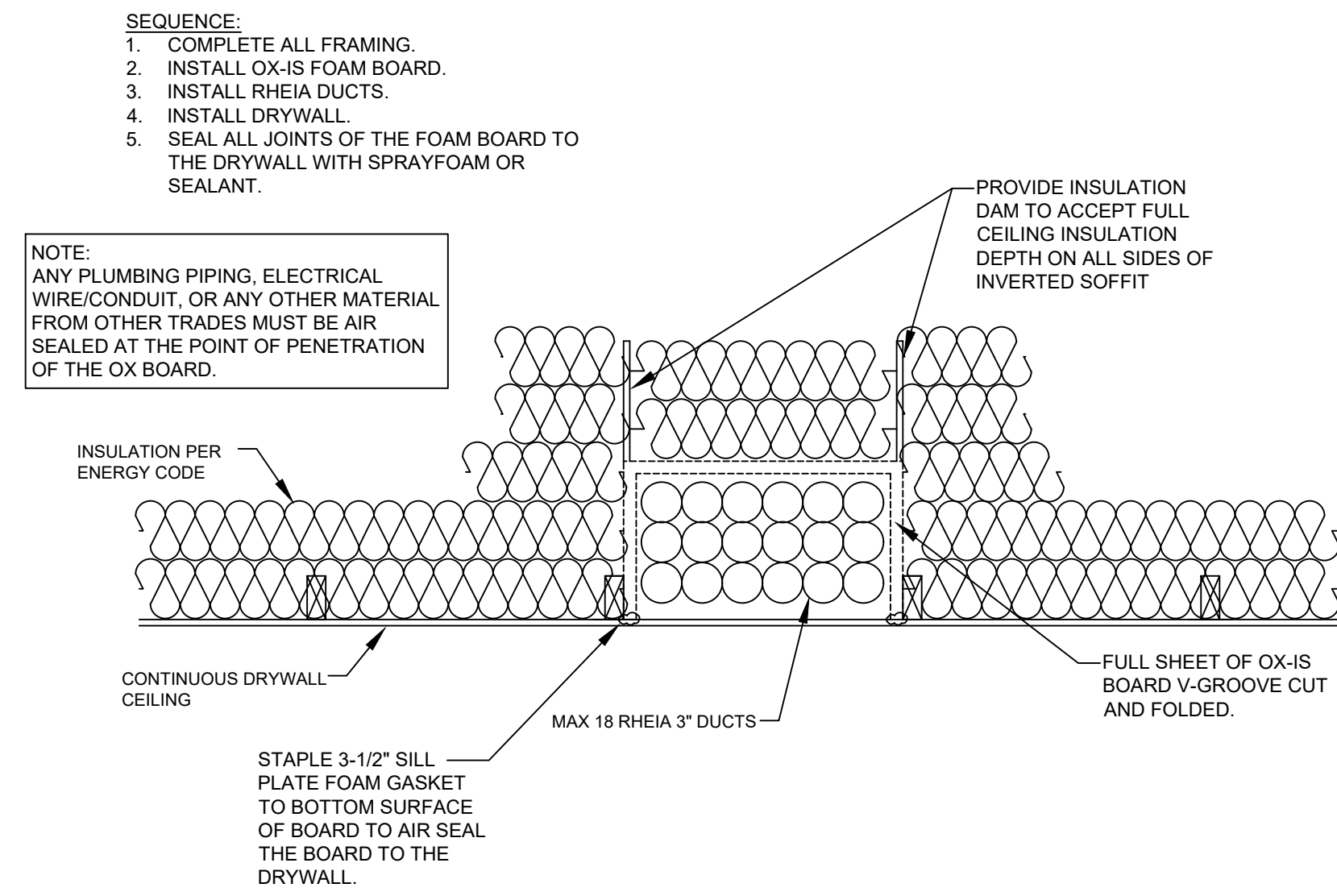
INVERTED SOFFIT DETAIL - DOWN ROOF TRUSS BAY



INVERTED SOFFIT DETAIL - PERPENDICULAR TO ROOF TRUSSES

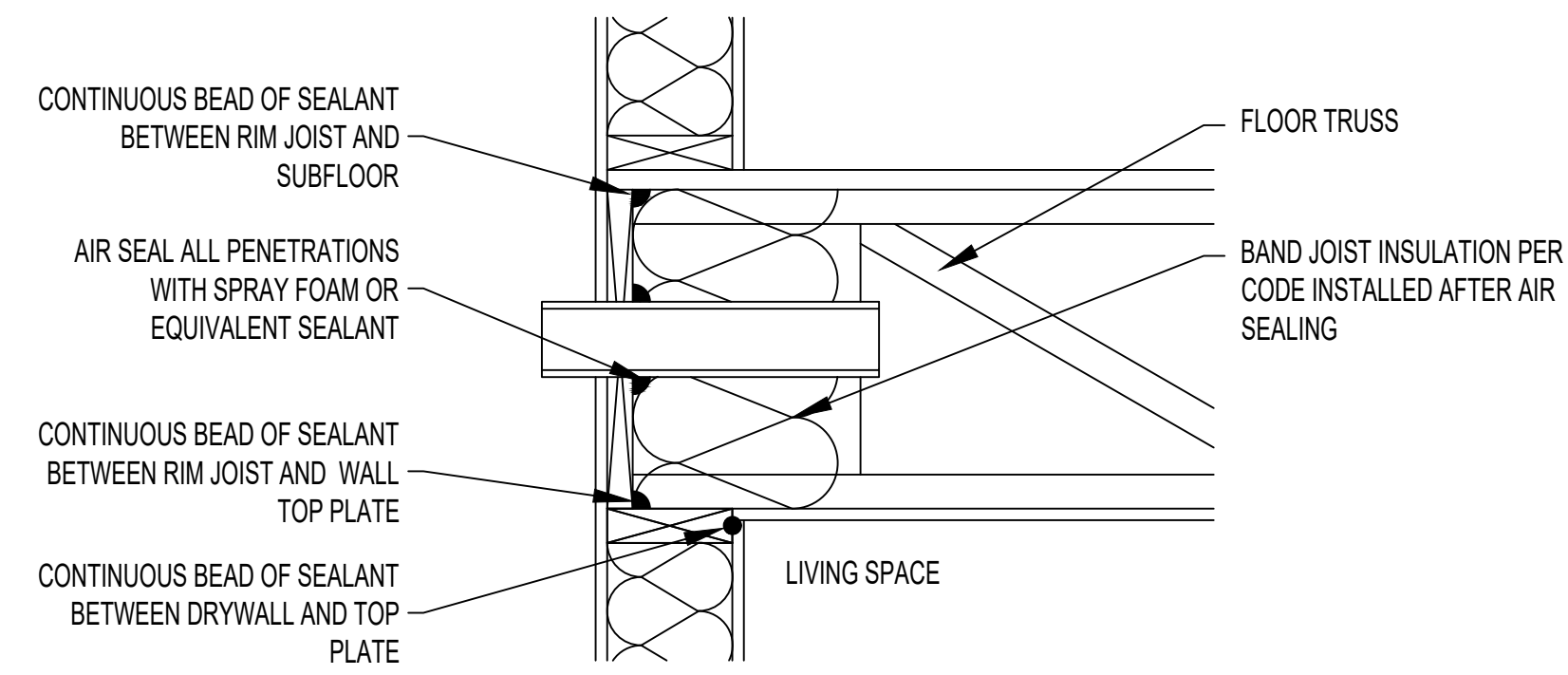
GENERAL NOTES:

1. DETAILS SHOWN ARE SUGGESTED AIR SEALING METHODS FOR KEEPING RHEIA'S UNINSULATED DUCTS WITHIN THE BUILDING THERMAL ENVELOPE. BUILDERS SHOULD DEVELOP THEIR OWN CONSTRUCTION DETAILS TO ADD TO CONSTRUCTION DOCUMENTS AND CONSULT ENERGY RATING COMPANIES FOR BEST PRACTICES.
2. THIS DOCUMENT IS INTENDED TO SHOW ENVELOPE AIR SEALING BEST PRACTICES ONLY. FOR FRAMING DIMENSIONS AND MECHANICAL INSTALLATION DETAILS SEE THE RHEIA FRAMING INTEGRATION DOCUMENT AND PERMITTED CONSTRUCTION DOCUMENTS.
3. RHEIA RECOMMENDS USING XPS OR OX-IS BOARD FOR ALL AIR BARRIERS. THESE PRODUCTS PROVIDE A VAPOR BARRIER AS WELL AS EXTRA INSULATION. THIS WILL REDUCE COLD SURFACES WITHIN THE STRUCTURE REDUCING THE CHANCE FOR CONDENSATION TO OCCUR. DRYWALL AND T-PLY CAN PROVIDE AN AIR BARRIER, BUT ARE MORE PERMEABLE AND MORE DIFFICULT TO AIR SEAL. RHEIA DOES NOT RECOMMENDED USING OSB FOR AN AIR BARRIER. OSB IS MORE AIR PERMEABLE, MORE DIFFICULT TO AIR SEAL, AND IS A FOOD SOURCE FOR MOLD IF ANY MOISTURE DOES OCCUR. CONSIDER THE CLIMATE WHEN SELECTING AN AIR BARRIER MATERIAL. MORE HUMID CLIMATES ARE MORE AT RISK FOR CONDENSATION, AND THEREFORE ARE MORE CRITICAL FOR A HIGH-PERFORMING AIR BARRIER.

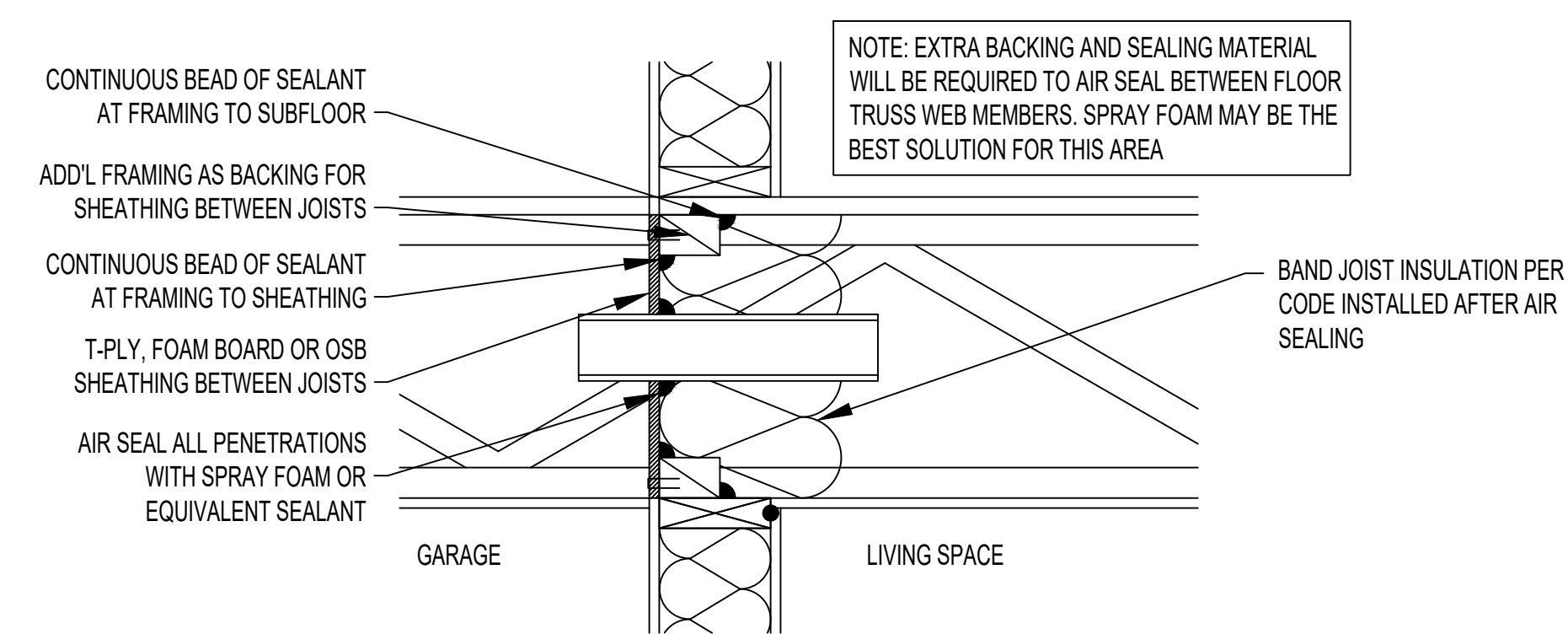


PARALLEL TO TRUSSES

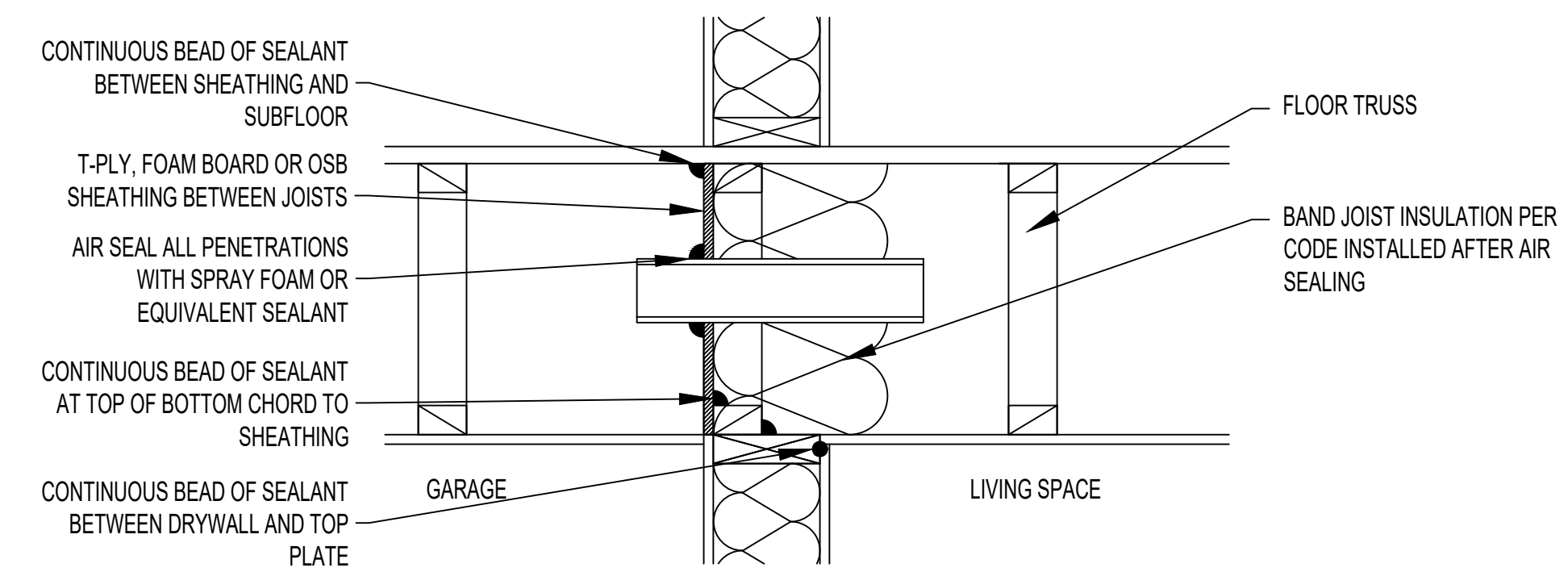
PERPENDICULAR TO TRUSSES



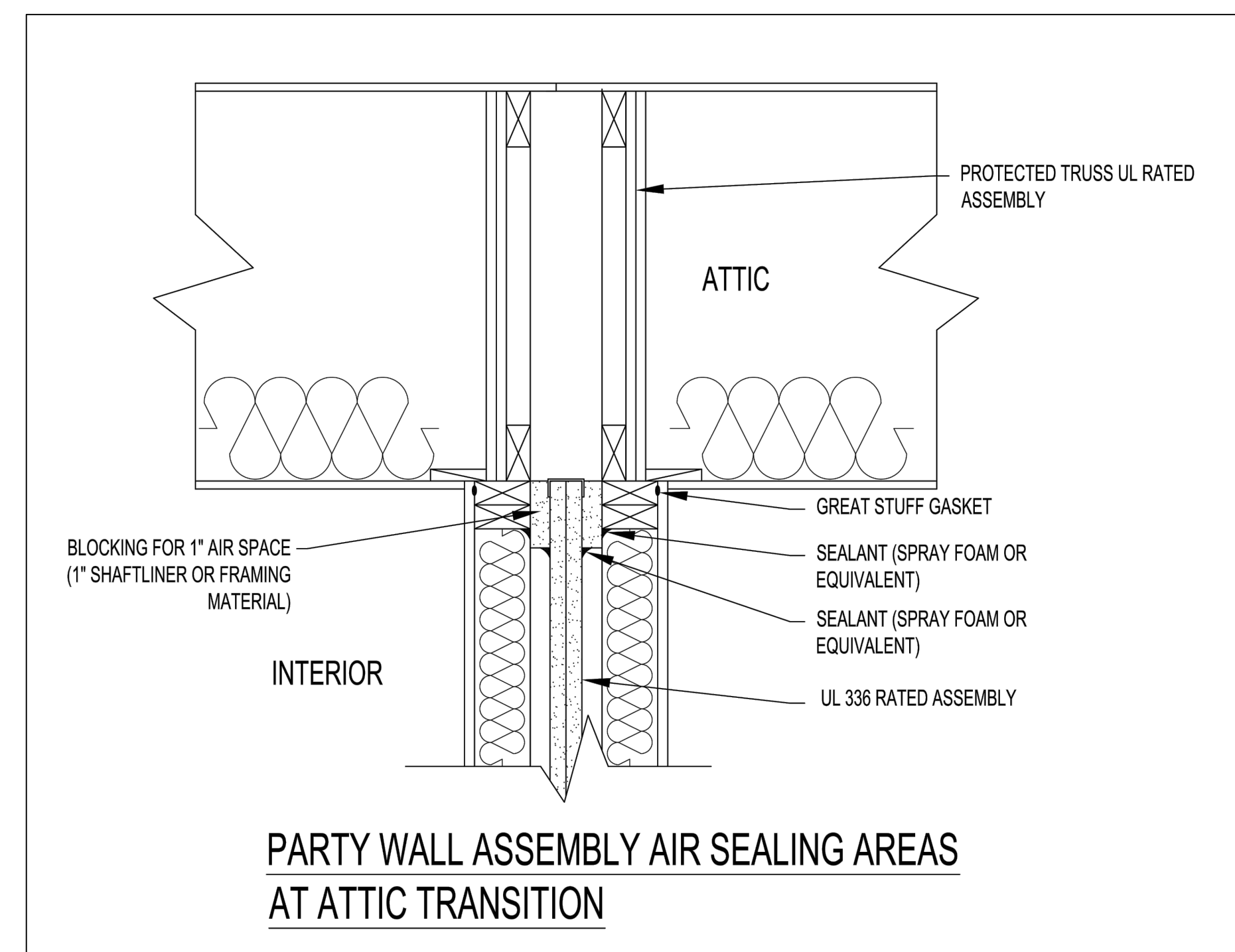
EXTERIOR WALL RIM JOIST DETAIL



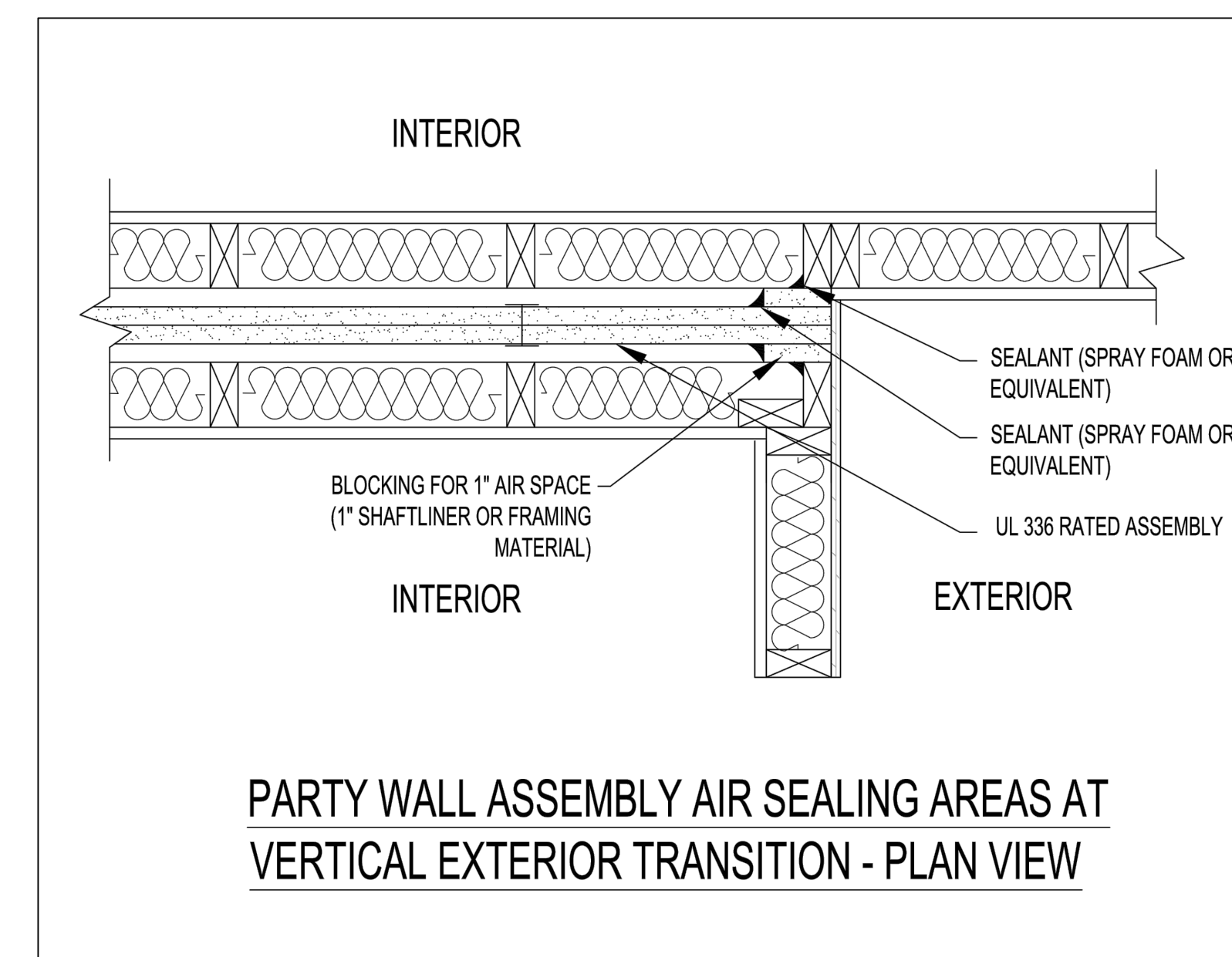
GARAGE SEPARATION WALL AIR BARRIER DETAIL



GARAGE SEPARATION WALL DETAIL PARALLEL JOIST TO WALL



PARTY WALL ASSEMBLY AIR SEALING AREAS AT ATTIC TRANSITION



PARTY WALL ASSEMBLY AIR SEALING AREAS AT VERTICAL EXTERIOR TRANSITION - PLAN VIEW